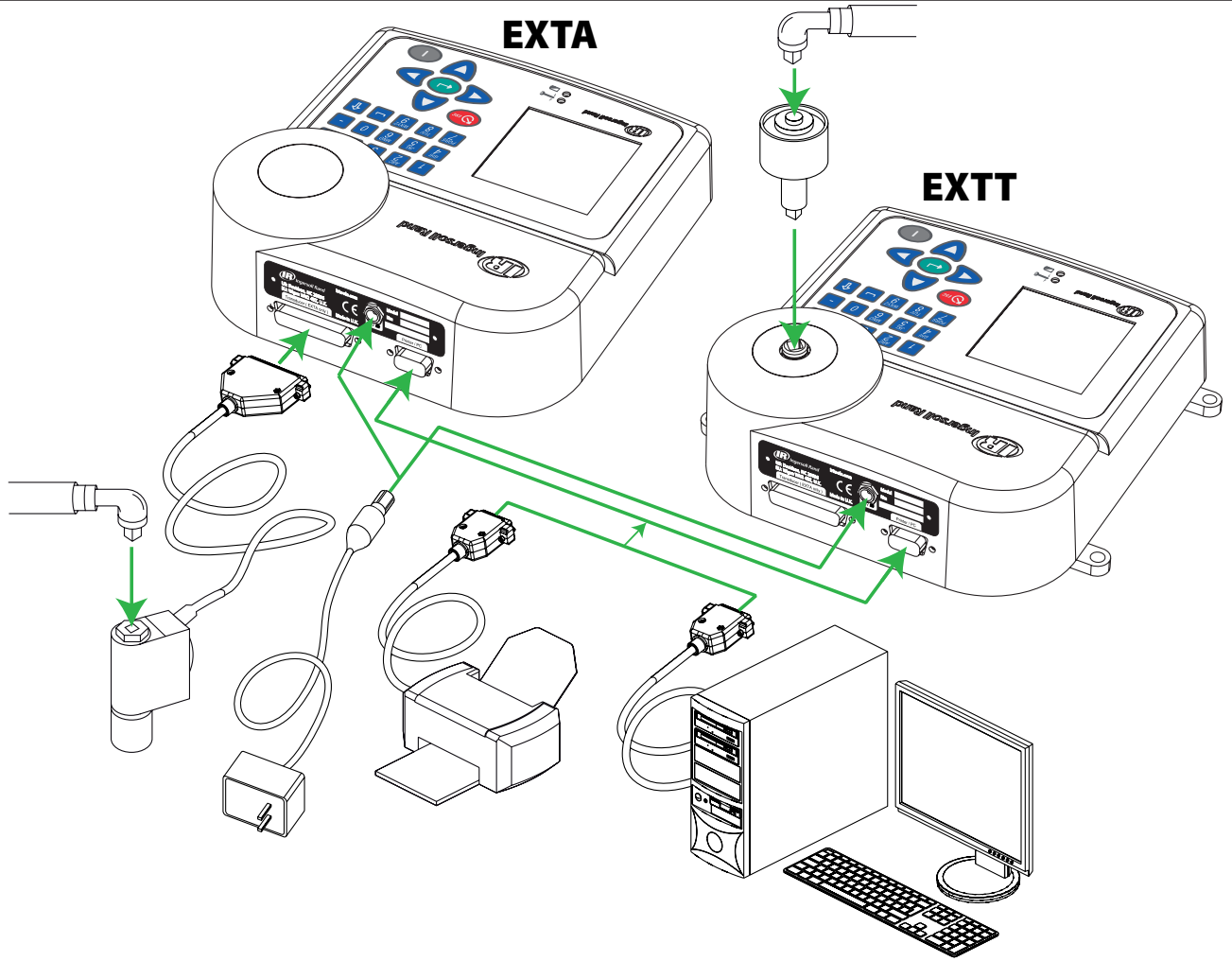
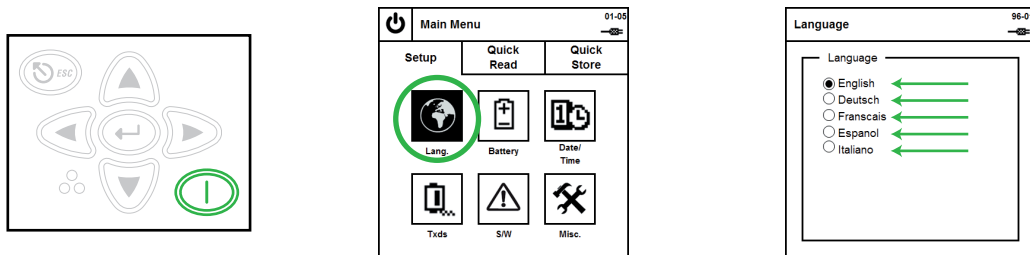


# EXTA/EXTT Quick Start Guide

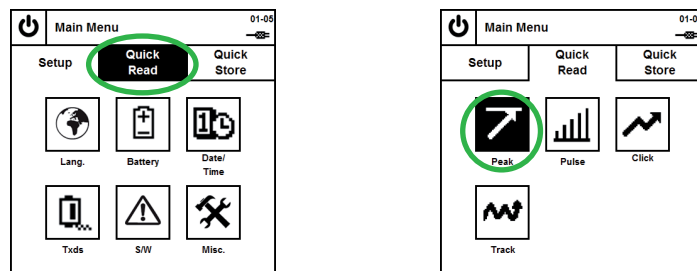
1



2



3



# EXTA/EXTT Quick Start Guide

## EXTT & EXTA (TSD, TRD, UTA & Smart Transducers)

4a

Quick Reading 02-02  
0.00 Nm  
UTA 30.00Nm 180 0.2 s  
S/N = 27916 542 Hz

Quick Setup 03-02  
Txd Span 30.00 Nm  
Recal. Due: 09/06/2010  
Displayed Units Nm  
Direction Auto  
Cycle End Time 0.2 s  
Freq. Response 542 Hz

Quick Setup 03-02  
Torque Thr. 1.50  
2nd Parameter None  
Torque Thr. 1.50  
2nd Parameter Angle  
Angle Thr. 3.00

4b

## EXTA (I/S & H/O Transducers)

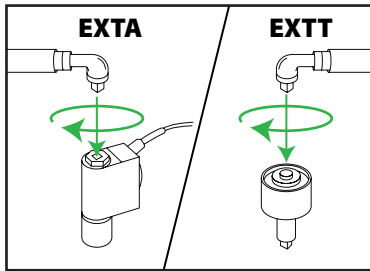
Quick Setup 03-01  
Transducer I/S  
Span 50.00  
Torque @ 2mV/V 50.00  
Transd. Units Nm  
Pulses Per Rev 0  
Millivolts/Volt 2.000  
Bridge Res. 350

Quick Setup 03-02  
Displayed Units Nm  
Direction Auto  
Cycle End Time 0.2 s  
Freq. Response 542 Hz

Quick Setup 03-02  
Torque Thr. 2.50  
2nd Parameter None  
Torque Thr. 1.50  
2nd Parameter Angle  
Angle Thr. 3.00

5

Quick Reading 02-02  
0.00 lbft  
UTA 30.00Nm 180 1.0 s  
S/N = 27916 542 Hz



Quick Reading 02-02  
33 2.04  
3.59 lbft  
UTA 30.00Nm 180 1.0 s  
S/N = 27916 542 Hz

6

Quick Reading 02-02  
33 2.04  
3.59 lbft  
UTA 30.00Nm 180 1.0 s  
S/N = 27916 542 Hz

Main Menu 01-01  
Setup Quick Read Quick Store  
Peak Pulse Click  
Track

